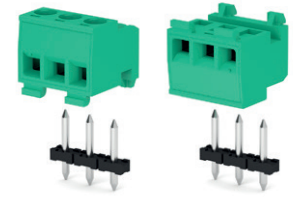
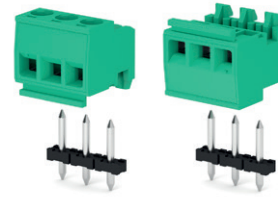
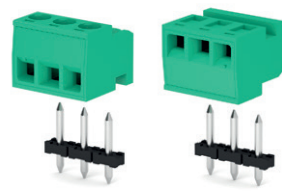
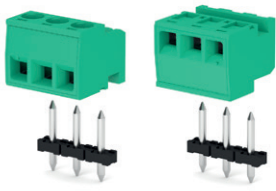


90°-270°, safe female
CSF_OJ1 - 2 ÷ 25 poles, 5 mm / .197" pitch
CSF_OJ2 - 2 ÷ 13 poles, 10 mm / .394" pitch

90° - 270°, safe female
CSF_ON1 - 2 ÷ 25 poles, 5 mm / .197" pitch
CSF_ON2 - 2 ÷ 13 poles, 10 mm / .394" pitch

90°-270°, side stackable female with snap features
CSF_OS1 - 2 ÷ 25 poles, 5 mm / .197" pitch
CSF_OS2 - 2 ÷ 13 poles, 10 mm / .394" pitch

90°-270°, side stackable female with snap features
CSF_OG1 - 2 ÷ 25 poles, 5 mm / .197" pitch
CSF_OG2 - 2 ÷ 13 poles, 10 mm / .394" pitch

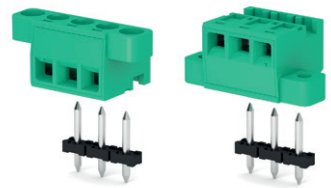
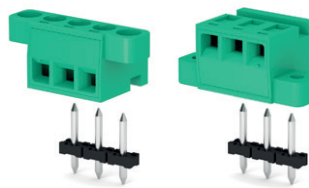
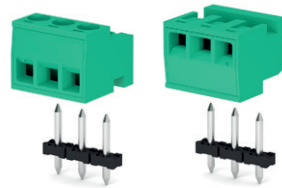
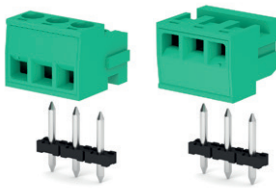


Flexible use for pre-series, modular female
CSF_OU1 - 2 ÷ 25 poles, 5 mm / .197" pitch
CSF_OU2 - 1 ÷ 13 poles, 10 mm / .394" pitch

Flexible use for pre-series, side stackable female
CSF_O01 - 2 ÷ 25 poles, 5 mm / .197" pitch
CSF_O02 - 2 ÷ 13 poles, 10 mm / .394" pitch

90°-270°, female with high flange
CSF_OV1 - 2 ÷ 25 poles, 5 mm / .197" pitch
CSF_OV2 - 2 ÷ 12 poles, 10 mm / .394" pitch

90°-270°, female with high flange
CSF_OF1 - 2 ÷ 23 poles, 5 mm / .197" pitch
CSF_OF2 - 2 ÷ 12 poles, 10 mm / .394" pitch



Usable with:

CSM

CSMH

CSMD

Page 53

Page 53

Page 54

